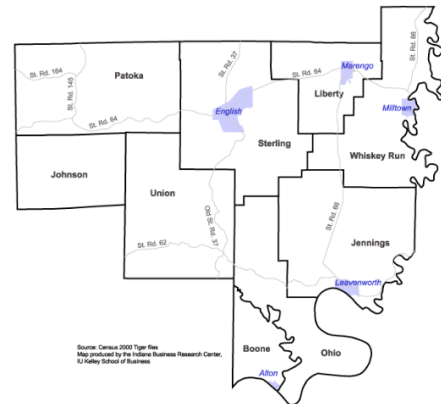
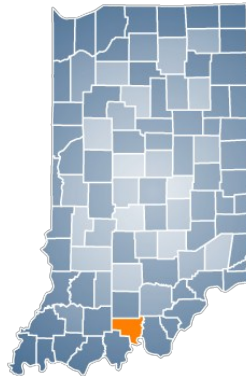


# CRAWFORD COUNTY

City/Town	Population (2010)
Marengo	828
Milltown	818
English	645
Leavenworth	238
Alton	53



## Economic Development Resources

- Crawford County Economic Development: [www.selectcrawfordcounty.com](http://www.selectcrawfordcounty.com)
- Indiana Region 15 Planning Commission: <http://www.ind15rpc.org/>

## City/Town Resources

- Town of Leavenworth: <http://leavenworthindiana.org/>
- Town of Milltown: <http://townofmilltown.org/>

## School Corporation/District

- Crawford County Community Schools: <http://www.cccs.k12.in.us/>

## Community Philanthropy

- Community Foundation of Crawford County: <http://cf-cc.org/>

## Community Organizations

- Crawford County Chamber of Commerce: <http://www.crawfordcountychamber.com/>
- Crawford County Tourism Center: <http://www.crawfordcountyindiana.org/>

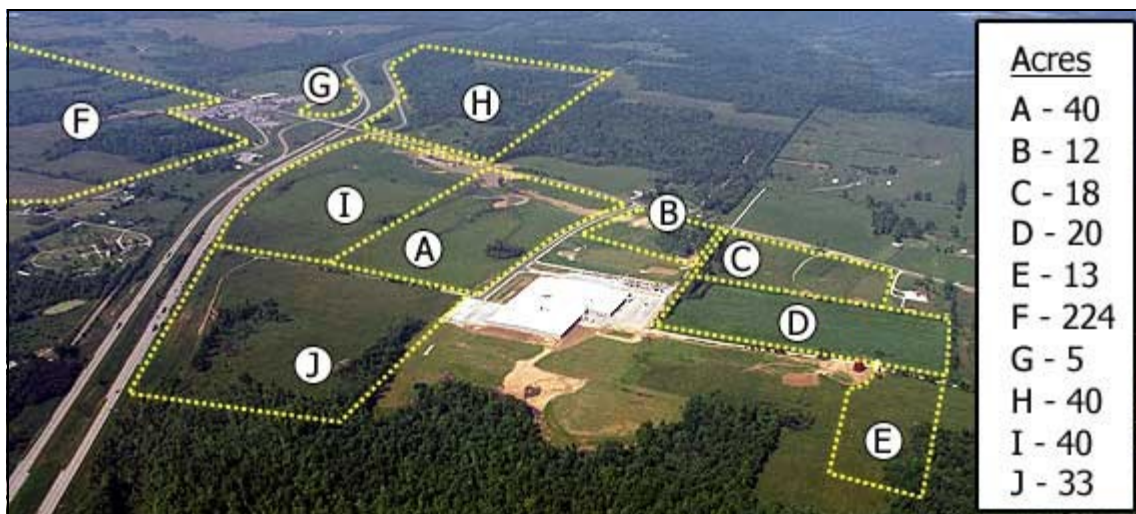
## Quick Facts

- Crawford County has a population of 10,658 residents (2011) .
- Interstate 64 (I-64) passes through the county providing immediate access for the Cincinnati/Louisville Corridor. County is located 35-40 miles from Louisville.
- Norfolk/Southern Railway lines are active in the northern part of the county. Barges on the Ohio River are licensed to unload at Leavenworth.
- There is a total of 445 acres zoned for industrial use located in the Crawford County Southeast Industrial Park. The Park is located a quarter mile from I-64 in Leavenworth, Indiana.
- Since 1998, the Community Foundation of Crawford County has provided over \$5.5 million in grant funding/programming to benefit Crawford County, and over 70+ partial and full scholarships for Crawford County seniors.
- Crawford County has an abundance of recreational activities available including Marengo Cave, Harrison-Crawford State Forest, O'Bannon Woods, Patoka Lake, and Lock and Dam 44 Historical Park.

## Major Employers

- **Jasper Engines and Transmissions** (<http://www.jasperengines.com/>): nation's largest mass remanufacturer of a diverse line of drive train components. They recently completed a 41,488-square-foot expansion to the Crawford County Facility bringing total size of the facility and distribution center to over 408,000 square feet.
- **Marengo Warehouse and Distribution Center** (<http://www.marengowarehouse.com/>): a vast complex of storage chambers and roadways originally constructed as a result of limestone mining using the classic room and pillar method. With its dry, stable indoor climate (58-60 degrees year round) and secure access Marengo Warehouse offers a unique setting for storage of virtually any type of non-hazardous material. Paved, double-lane roadways 60 feet wide with metal halide lighting and ceilings 30 feet high mean customers can route OTR trucks and container loads of product and material directly to their own internal docks at Marengo.
- **Mulzer Crushed Stone, Inc.** (<http://www.mulzer.com/locations-products/>): quarry and crush limestone operations in Leavenworth and English. The largest is Cape Sandy with 130 employees located in Leavenworth.

## AVAILABLE SITES



The Crawford County Southeast Industrial Park has over 445 acres zoned for industrial use. Lots range in size from 5 acres to 224 acres. The Industrial Park is located on State Road 66, a quarter mile from Interstate 64 (I-64). The park has rail access and is located 35 miles from Louisville, Kentucky.

For additional information, please contact Don DuBois, Executive Director of Crawford County Economic Development at 812-739-2248 or [don@selectcrawford.com](mailto:don@selectcrawford.com).

## Cultural and Recreation Activities

- **Harrison-Crawford State Forest** (<http://www.in.gov/dnr/forestry/4826.htm>): over 26,000 acres of hardwood timber with beautiful views of the Ohio River. This forest offers 100 miles of horse trails, electric and primitive camping, hiking, canoeing, hunting, and even archery. There are several shelter houses and picnic areas available.
- **Marengo Cave** (<http://marengocave.com/>): Designated a National Natural Landmark in 1984 as the most highly decorated cavern in the Interior Lowlands of the U.S. It currently Indiana's most visited show cave.
- **O'Bannon Woods** (<http://www.in.gov/dnr/parklake/2976.htm>): Located within the Harrison-Crawford State Forest, this park includes a campground, shelter houses and picnic areas, hiking trails, fishing and boating, horse trails, a nature center, and an aquatic center.
- **Ohio River Scenic Byway** (<http://ohioriverbyway.com/>): runs right through Leavenworth on State Road 62.
- **Patoka Lake** (<http://www.patokalakeindiana.com/>): the second largest reservoir in Indiana and is spread across Dubois, Crawford, and Orange counties in southern Indiana.
- **The Lock and Dam 44 Historical Park** (<http://www.lockanddam44.com/>): situated alongside the Ohio River, this park is the site of the historic Lock and Dam No. 44. The park features a boat launching ramp which provides public access to the Ohio River for skiing, boating, fishing, and canoeing.

## Annual Festivals

- The Leavenworth Riverfest occurs in August/September (<http://leavenworthindiana.org/riverfest.html>)
- The Sorgum Festival is held on the third Saturday of October at Crawford County Junior-Senior High School



## SPOTLIGHT ON: Jasper Engines and Transmissions

In June 2011, Jasper Engines and Transmissions completed its 41,488-square-foot expansion to the Crawford County Facility. It has effectively increased the size of the facility to over 408,000 square feet under roof.

The expansion allows the space needed to merge Jasper Innovative Solutions with the company's Distribution operations for a more efficient flow of finished product, along with allowing both companies to grow.



JIS currently has over 12,000 part numbers in stock. With the new expansion, the company has the ability to store over 20,000 part numbers, depending on the quantity of each part. Not only does the expansion give JIS the opportunity to fill all orders under one roof, but keeps them involved in new product development

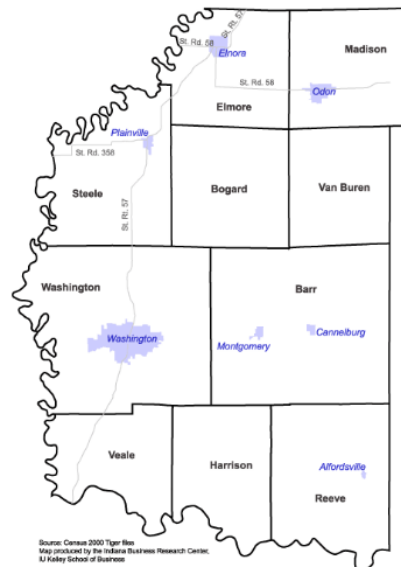
The Crawford County facility is located approximately 40 miles east of Jasper, Ind. Originally constructed in 1998 for the purpose of core processing, the Crawford County facility has evolved into a complete remanufacturing operation in the disassembly, machining, assembly and testing of gas engines, transmissions, transfer cases and select manual transmissions.

Jasper's Product Distribution Center opened at Crawford County in 2000. Nearly 600 Jasper remanufactured products are shipped from the Distribution Center each day to a network of 40 branch locations throughout the United States. The Distribution Center is also the primary location for the unloading, tagging and identification of core and miscellaneous product from the branch locations. Jasper Innovative Solutions, a sister company to Jasper, moved to the Crawford County facility in 2008. JIS is a supplier of vehicle parts to the United States Postal Service Vehicle Maintenance Facilities and other fleets throughout the United States

Source: <http://stnonline.com/home/press-releases/3418-jasper-engines-and-transmissions-completes-crawford-county-ind-expansion>

# DAVIESS COUNTY

City/Town	Population (2010)
Washington	11,509
Odon	1,354
Elnora	640
Plainville	476
Montgomery	343
Cannelburg	135
Alfordsville	112



Source: Census 2000 Tiger files  
Map produced by the Indiana Business Research Center,  
IU Kelley School of Business

## Economic Development Resources

- Daviess County Economic Development Corporation: <http://www.dcg.org/>
- WestGate Authority <http://www.westgatecrane.com/>
- Southern Indiana Development Commission: <http://www.sidc.cc/>

## City/Town Resources:

- City of Washington: <http://www.washingtonin.us/>
- Town of Odon: <http://odonindiana.org/>

## Community Organizations:

- Daviess County Chamber of Commerce: <http://www.daviesscountychamber.com/>
- Daviess County Visitors Bureau: <http://www.daviesscounty.net/>

## School Corporations/Districts:

- Barr-Reeve Community Schools: <http://www.barr.k12.in.us/>
- North Daviess Community Schools: <http://www.ndaviess.k12.in.us/default.html>
- Washington Community School Corporation: <http://www1.wcs.k12.in.us/>

## Community Philanthropy:

- Daviess County Community Foundation: <http://www.daviesscommunityfoundation.org/>

## Quick Facts

- Daviess County has a population of 31,978 residents (2011) . Its population grew 6.1% from 2000-2010.
- The expansion of Interstate 69 (I-69), a transcontinental interstate highway, will go directly through Daviess County right next to the Median Center of the US population decreasing travel time to Indianapolis, Bloomington, and Evansville
- Manufacturing accounts for 1,862 jobs or 17.8% of total employment in the county (2010).
- Located in proximity to Naval Surface Warfare Center (NSWC) Crane, a \$2 billion military installation and the third largest U.S. Naval facility by area. NSWC Crane employs over 3,500 civilian and military personnel in engineering, technician, and administrative positions.
- WestGate@Crane Technology Park is located within the County. It is qualified as a certified technology park (CTP) by the State of Indiana and Home to over ten defense contractors with NSWC Crane-related contracts including SAIC and EG&G.
- The WestGate Academy is an Economic Development Administration (EDA) -funded project that is current under construction at the WestGate @ Crane Technology Park. It will provide classroom space, conference space, and business incubation space starting in Fall 2012.
- Daviess County is home to over 725 Old Order Amish Families. There are three Amish restaurants operating in the County (Odon Essen Haus, Gasthof Amish, and Knepp's Restaurant).

## Major Employers

- **Daviess Community Hospital** (<http://www.dchosp.org/>): operates a 74-bed hospital in Washington, Indiana that includes acute care, OB, intensive care, inpatient rehabilitation facility and behavioral health.
- **Perdue** (<http://www.jobswashingtonindiana.com/>): currently employs over 1,000 people at the Washington, Indiana plant with a salary and wage payout of over 25 million dollars annually; produces ready-to-cook fresh products for retail distribution, including boneless breast, ground turkey, turkey burgers and turkey sausages.
- **Peabody Energy** (<http://www.peabodyenergy.com/content/270/Publications/Fact-Sheets/Viking-Mine-Corning-Pit>): Viking Mine in Daviess County, Ind., shipped 3.2 million tons of coal in 2010, which was trucked to electricity generating and industrial customers. The mine's workforce of approximately 140 work on two shifts per day, seven days a week year-round. Six different seams of coal are mined. Viking has 7 million tons of assigned recoverable reserves.
- **NASCO Industries, Inc.** ([http://www.nascoinc.com/company\\_info.htm](http://www.nascoinc.com/company_info.htm)): North America's leading manufacturer of protective all-weather gear in a variety of wet-weather and cold weather apparel located in Washington, Indiana.
- **Grain Processing Corporation** (<http://www.grainprocessing.com/corporate-info/facilities-services.html>): operates a state-of-the-art corn wet milling plant in Washington, Indiana.
- **Olon Industries** (<http://66.207.97.11/index.php/company/locations/>): operates 112,000 SQFT facility in Washington, Indiana that produces wood components for office furniture.
- **Graber Post** (<http://www.graberpost.com/>): manufacture and distribute materials for any post frame structure or metal roofing project; headquartered in Montgomery, Indiana with a workforce of 150 employees; listed among the top 100 Lumber-Building Materials companies by ProSales.

## AVAILABLE SITES

**Bouchie**



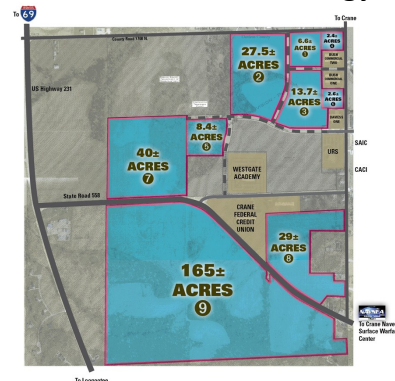
**Elnora Site II**



**Odon Industrial Park**



**WestGate@Crane Technology Park**



For more information please contact Ron Arnold, Executive Director of the Daviess County Economic Development Corporation at 812-254-1500. See also: <http://www.dcedc.net/sites>.

## Cultural and Recreation Activities

- **Glendale Fish & Wildlife Area** (<http://www.in.gov/dnr/fishwild/3095.htm>): dedicated to providing quality hunting and fishing opportunities while maintaining 8,060 acres of land and over 1,400 acres of lakes and impoundments.
- **Gasthof Amish Village** (<http://www.gasthofamishvillage.com/>): located on 92 acres and includes a hotel, a restaurant, antiques and craft shops, and access to a 25 acre lake.
- **Dinky's Auction Center** (<http://www.dinkysauctioncenter.com/>): a 36,000 square foot barn that hosts live auctions every Friday night.

## Annual Festivals

- Old Settlers Festival in Odon occurs in August (<http://odonoldsettlers.com/>)
- Daviess County Turkey Trot Festival in Montgomery occurs in September (<http://www.montgomeryruritanclub.com/TurkeyTrot.htm>)



## SPOTLIGHT ON: North Daviess 21st Century High School



Trust, Respect, & Responsibility

North Daviess 21st Century High School continues to make headlines as one of the most exemplary New Tech implementation sites in the nation. Not only is this school leading its community's integration of technology, it also is leading the nation as the smallest school to implement a computer-based "living textbook" program—and it has done so faster than any other school in the United States.

Living textbooks are mini-laptop computers that students use instead of regular textbooks to access locally created project-based content. Rather than subscribing to curriculum services like many other schools, North Daviess uses the computers to support the project-based learning approach by allowing teachers and students to guide lesson content.

Administrators are so confident in the benefits of a technology-focused curriculum that the school district covers half the cost of the computers. Students then pay minimal fees toward the purchase of their computer rather than textbook rental fees. Freshmen students pay only \$55 per year and incoming sophomores pay \$73.

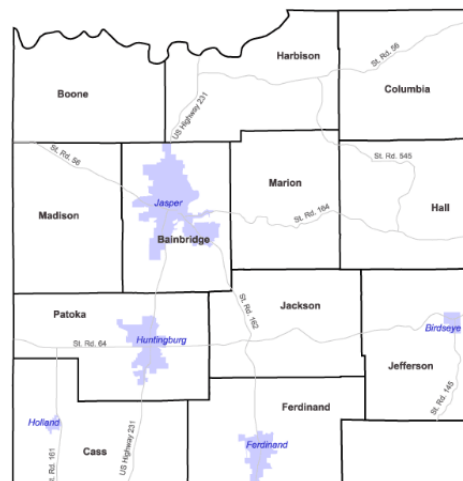
North Daviess Community Schools began integrating technology into its curriculum almost a decade ago. Administrators expected some pushback from the rural community given its sizeable Amish population, but the venture has proven quite successful.

In fact, the community has been very supportive of North Daviess' transition to New Tech and even welcomed the resulting technological advances. According to Whitlock, some Amish families have installed generators in their horse barns to support the technology.

Source: <http://cell.uindy.edu/e-news/nths/0124.php>

# DUBOIS COUNTY

City/Town	Population (2010)
Jasper	15,038
Huntingburg	6,057
Ferdinand	2,157
Holland	415
Birdseye	415



Source: Census 2000 Tiger files  
Map produced by the Indiana Business Research Center, IU Kelley School of Business

## Economic Development Resources

- Dubois County Area Development Corporation: <http://www.dccadc.org/>
- Indiana 15 Regional Planning Commission: <http://www.ind15rpc.org/>

## Community Organizations

- Dubois County Visitors Center and Tourism Commission: <http://www.visitduboiscounty.com/>
- Jasper Chamber of Commerce: <http://www.jasperin.org/>
- Huntingburg Chamber of Commerce: <http://huntingburgchamberofcommerce.org/>

## Higher Education

- Vincennes University Jasper: <http://www.vinu.edu/jasper>

## Community Philanthropy

- Dubois County Community Foundation: <http://www.duboiscountycommunityfoundation.org/>

## City/Town Resources

- Dubois County Government: <http://www.duboiscountyin.org/>
- City of Jasper: <http://www.jasperindiana.gov/>
- City of Huntingburg: <http://www.huntingburg-in.gov/>
- Town of Ferdinand: <http://ferdinandindiana.org/>

## School Corporations/Districts

- Greater Jasper Consolidated Schools: <http://www.gjcs.k12.in.us/>
- Northeast Dubois School Corporation: <http://www.nedubois.k12.in.us/>
- Southwest Dubois County School Corporation: <https://sites.google.com/a/swdubois.k12.in.us/www/>
- Southeast Dubois County School Corporation: <http://www.sedubois.k12.in.us/>

## Quick Facts

- Dubois County has a population of 42,199 (2011).
- Manufacturing is the largest industry in the county accounting for 10,130 jobs in the county, 38.7% of total employment (2010). Health care, social assistance is second with 2,922 jobs in the county, 11.2% of total employment (2010).
- Of the population, 22.0% of adults 25 years and older have a Bachelor's degree or higher. This ranks the county 19th among 92 counties in Indiana.
- Jasper has been described as the "Wood Capital of the World" with a large number of furniture companies.
- The headquarters of Kimball International are located in Jasper. It is a \$1.2 billion publicly-traded furniture and electronics manufacturing company with over 3,000 employees locally in Jasper and 6,500 employees worldwide. Kimball International was listed in 2007 by *Forbes* magazine as one of the "Platinum 400", also known as "America's Best Big Companies"
- Huntingburg has been used as a filming location for many movies including "A League of Their Own", "Hard Rain", and the HBO film "Soul of the Game."

## Major Employers

- **Kimball International** (<http://www.kimball.com/>): a pre-eminent manufacturer of furniture, furniture components, and electronic assemblies, serving customers around the world. Headquartered in Jasper with over 3,000 employees working in Dubois County.
- **Jasper Engines & Transmissions** (<http://www.iatn.net/jasper>): the nation's largest mass remanufacturer of a diverse line of drive train components. Annual production includes over 117,000 remanufactured gas and diesel engines, transmissions, differentials, stern drives, outboard lower units, outboard powerheads, performance products, and alternate fuel engines. Jasper employs over 1,500 in Dubois County.
- **OFS/Styline** (<http://www.ofsbrands.com/>): manufacturer of wood office furniture for over 75 years with its headquarters located in Huntingburg. OFS employs over 1,500 in Dubois County.
- **Memorial Hospital** (<http://www.mhhcc.org/>): employs more than 1,300 people and has more than 150 physicians including 85 on the Active Medical Staff. As a regional health center, the staff provides a comprehensive range of medical care for residents of Dubois and surrounding counties including more than 7,700 inpatients and 172,000 outpatients.
- **MasterBrand Cabinets Inc.** (<http://www.masterbrand.com/>): manufacturer of cabinetry for kitchens, bathrooms, and other-room solutions. Based in Jasper, MasterBrand employs nearly 900 in Dubois County.
- **Jasper Rubber Products, Inc.** (<http://www.jasperrubber.com/>): specializes in the manufacturing of molded rubber, lathe cut rubber, TPE, Plastics, and LSR Products. Employ over 850 individuals.

## AVAILABLE SITES

**Ferguson Site (Huntingburg)**



**IMI Bretzville Site (Huntingburg)**



**Scenic Hills Commercial Park (Ferdinand)**



**Huntingburg RR 19th Street**



**Giesler Property (Jasper)**



**Ferdinand Industrial Site**



**Buffalo Flat (Jasper)**



**Huntingburg Airport Properties**



**Voelkel Farms (Huntingburg)**



For detailed reports of each of the sites and additional properties please see: <http://www.dcad.org/properties/properties.cfm>. For more information please contact Jim Dinkle, President of the Dubois Area Development Corporation at 812-482-9650 or [jdinkle@DCADC.org](mailto:jdinkle@DCADC.org).

## Cultural and Recreation Activities

- **Dubois County Museum** (<http://www.duboiscountymuseum.org/>): located in Jasper, traces the region's rich history from the Ice Age through the present.
- **Dr. Ted's Musical Marvels** (<http://www.drteds.com/>): museum that houses a collection of mechanical musical instruments collection from the 1800's to the mid-1900's.
- **Ferdinand State Forest** (<http://www.in.gov/dnr/forestry/4824.htm>): established in 1934 as a Civilian Conservation Corps (CCC) camp, CCC workers built roads, service buildings, and one of the most beautiful forest lakes in the state. Ferdinand State Forest is well known for its excellent deer and squirrel hunting.
- **City of Huntingburg Museum** (<http://huntingburg-in.gov/TravelTourism/Museum.aspx>): artifacts on display illustrate the life and times of the people of Huntingburg.
- **Patoka Lake** (<http://www.patokalakeindiana.com/>): the second largest reservoir in Indiana and is spread across Dubois, Crawford, and Orange counties in southern Indiana.
- **Spirit of Jasper** (<http://www.spiritofjasper.com/>): restored train that has excursions from Jasper to French Lick.
- **Monastery Immaculate Conception** (<http://www.thedome.org/>): one of the largest Benedictine communities of women in the United States with 163 members.
- **Saint Joseph Church** (<http://www.saintjosephjasper.org/>): historic Catholic Church in Jasper constructed in the 1880's.

## Annual Festivals

- The Jasper Strassenfest is a four-day event held annually during the first weekend in August (<http://www.jasperstrassenfest.org/>)
- The Huntingburg Herbstfest is an annual event held in September (<http://www.huntingburg-in.gov/Recreation/SpecialEvents.aspx>)

### **SPOTLIGHT ON: Jasper Advanced Manufacturing and Technology Center (VU Jasper)**

The Advanced Manufacturing & Technology Center to be constructed on the VU Jasper Campus will house programming to serve the education and training needs of employers and individuals in Dubois and surrounding counties.

The facility will provide:

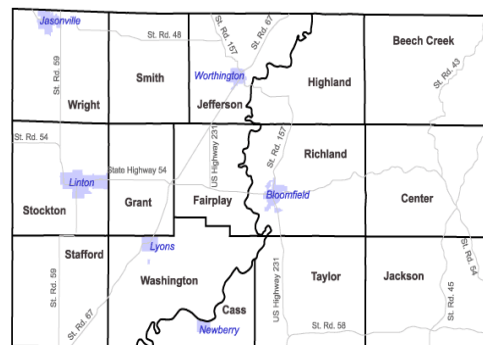
- Advanced training for manufacturing employers that need their workers to apply new technologies.
- Specialty programming for incumbent workers who wish to upgrade their skills to advance their careers.
- Specialized continuing education programming for high skilled engineers and scientists in regional manufacturing companies.
- Space for companies to pilot new processes and train employees in their application. • Career and technical classes in certificate and associate degree programs for students preparing to enter the workforce.
- Programming for high school students enrolled for dual-credit in career and technical education classes.
- Programming for high school students in Project Lead-the-Way technology programs. • Increased capacity to serve high school teachers and students in science, technology, engineering and mathematics (STEM) courses.
- Office, auditorium, and meeting space for workforce development and economic development organizations to conduct business, hold meetings and conferences, and sponsor workshops and classes in collaboration with VUJC.



Source: <http://www.vinu.edu/content/jcat>

# GREENE COUNTY

City/Town	Population (2010)
Linton	5,413
Bloomfield	2,405
Jasonville	2,222
Worthington	1,463
Lyons	742
Switz City	293
Newberry	193



Source: Census 2010 Tiger files  
Map produced by the Indiana Business Research Center, IU Kelley School of Business

## Economic Development Resources

- Greene County Economic Development Corporation: <http://www.gcfdc.us/>
- Southern Indiana Development Commission: <http://www.sidc.cc/>
- WestGate Authority <http://www.westgatecrane.com/>

## Community Organizations

- Greene County Tourism: <http://www.visitgreenein.com/>
- Linton-Stockton Chamber of Commerce: <http://www.lintonchamber.org/>

## Community Philanthropy

- Greene County Foundation: <http://www.greenecountyfoundation.org/>

## City/Town Resources

- Greene County Resources: <http://www.gcindiana.info/>
- Town of Bloomfield: <http://www.gojasonville.com/>
- Town of Jasonville: <http://www.gojasonville.com/>

## School Corporations/Districts

- Bloomfield School District: <http://www.bsd.k12.in.us/>
- Eastern Greene School Corporation: <http://www.egreene.k12.in.us/>
- Linton-Stockton School Corporation: <http://www.lssc.k12.in.us/>
- Metropolitan School District of Shakamak: <http://www.shakamak.k12.in.us/>
- White River Valley Schools: <http://www.wrv.k12.in.us/>

## Quick Facts

- Greene County has a population of 32,895 residents (2011); according to an April 29, 2012 article in the Bloomington Herald-Times (<http://www.gcfdc.us/PDF/TaleofTwoCounties20120429.pdf>), sales tax revenue more than doubled from 2007 to 2011 in Greene County.
- Located in proximity to Naval Surface Warfare Center (NSWC) Crane, a \$2 billion military installation and the third largest U.S. Naval facility by area. NSWC Crane employs over 3,500 civilian and military personnel in engineering, technician, and administrative positions.
- Construction is underway for Interstate 69 (I-69) to go through Greene County from NSWC Crane northeast to SR 37 on the Southwest side of Bloomington.
- Portions of WestGate@Crane Technology Park are located in Greene County. It is qualified as a certified technology park (CTP) by the State of Indiana and Home to over ten defense contractors with NSWC Crane-related contracts. I Science Applications International Corp. (SAIC) is Greene County's largest private employer with more than 1,000 employees working at more than half-dozen leased sites in Bloomfield, Northgate Tech Park in Bloomfield, in the WestGate at Crane Technology Park and the Eastgate facility in Bedford to support the operations of Naval Surface Warfare Center (NSWC) Crane.
- The Indiana-based Energy Systems Network (ESN) and several partners have established the Battery Innovation Center (BIC), a new non-profit initiative that will link battery manufacturers, government agencies and research labs, academia, and Fortune 500 companies together to accelerate the battery market. The BIC will involve a 40,000 square foot multi-million dollar facility at the WestGate@Crane Technology Park, in Greene County.

## Major Employers

- **Science Applications International Corp. (SAIC)** (<http://www.saic.com/career/indiana/>): a national defense contractor with a number of contracts at NSWC Crane. It is the largest private employer in Greene County with more than 1,000 employees.
- **Metal Technologies, Inc.** (<http://www.metaltechnologiesinc.com/home/>): Located in Bloomfield, the company focuses on production machining and has grown into a 130 person operation with \$9 million in sales as of 2012. They are apart of the CAP Group that includes Bedford Machine & Tool and Bedford Recycling.
- **Griffith Industries, LLC** ([http://www.griffinind.com/locations\\_map.php](http://www.griffinind.com/locations_map.php)): provides animal and bakery by-product and restaurant grease recycling services, reclaiming these materials into a host of value-added product streams. They have a rendering plant in Newberry that employs 65 individuals.
- **Bloomfield Manufacturing Company** (<http://www.hi-lift.com/index.html>): established in 1895, is one of the oldest companies in the state of Indiana, and is the parent company to both the Hi-Lift Jack Company, and the Kant-Slam Company. The bestselling product is the Hi-Lift Jack, a rugged, highly versatile jack that provides assistance in situations requiring lifting, pushing, pulling, winching, and clamping. It is located in Bloomfield with 50 employees.
- **Lewellyn Technology** (<http://www.lewellyn.com/>): company specializing in electrical maintenance training. Company is an industry leader in Arc Flash Hazard Analysis (Incident Energy Analysis), Electrical Safety Training and Electrical Safety Policy Development. Based in Linton, the company has 45 employees.

## AVAILABLE SITES

### Scotland Meadows at WestGate Technology Park



Scotland Meadows at WestGate Technology Park is located in Newberry and sites are available from 2 acres to 7 acres. The site was certified as a shovel-ready site by the Indiana Economic Development Corporation. Two tenants have already committed to locate in Scotland Meadows.

The WestGate at Crane Development Company LLC, (WGDC), based in Indianapolis, plans to construct 15,800 square feet of offices, labs and warehouse space in 2012 that would be able to accommodate up to six tenants and 35 new employees. Ranger Enterprises, an eastern Greene County-based defense contractor, will construct a two-phased building project. The company plans to relocate its headquarters from its current State Road 45 location to the tech park and hire 15 to 30 additional employees when the new building is complete.

For more information, please contact Joan C. Bethell, Executive Director at the Greene County Economic Development Corporation at 812-847-4500 or [jbethell@gcedc.us](mailto:jbethell@gcedc.us).

## Cultural and Recreation Activities

- **Goose Pond Fish and Wildlife Area** (<http://www.in.gov/dnr/fishwild/3094.htm>): in October 2005, with the help of The Nature Conservancy, Ducks Unlimited, Indiana Department of Transportation, United States Fish and Wildlife Service and many other organizations, IDNR purchased the 8,064-acre property including the 7,200 acres under permanent WRP easement, creating Goose Pond Fish and Wildlife Area.
- **Greene-Sullivan State Forest** (<http://www.in.gov/dnr/forestry/4821.htm>): forest boasts almost 9,000 acres of beautiful woodland and rolling hills dotted with more than 120 lakes, making it one of the most unique areas in Indiana.
- **Hillenbrand Fish & Wildlife Area** (<http://www.in.gov/dnr/fishwild/3093.htm>): dedicated to providing quality hunting and fishing opportunities while maintaining 3,400 acres of upland game and wetland habitat, lakes and shallow impoundments. It is located east and west of S.R. 59 approximately five miles north of Linton.
- **Minnehaha Fish and Wildlife Area** (<http://www.in.gov/dnr/fishwild/3087.htm>): consists of 8,382 acres of reclaimed surface mine land consisting of grassland and wooded bottomland areas. Approximately 600 acres of the property is water and are mostly strip pit lakes.
- **Shakamak State Park** (<http://www.in.gov/dnr/parklake/2969.htm>): three man-made lakes offer 400 acres of water for fishing and boating while a new family aquatic center provides swimming fun. About two-thirds of the campsites are in a wooded area, offering cool shade in the summer and beautiful fall colors in autumn.
- **Sculpture Trails Outdoor Museum** (<http://www.sculpturetrails.com/>): founded in 2002, the museum located in Solsberry has grown to proudly display over 60 large-scale sculptures by artists from around the world. The museum continually reviews work and offers many sculpture workshops and career development opportunities for artists.
- **Shawnee Theater** (<http://shawneetheatre.org/>): Indiana's oldest continuous professional summer theatre entering its 53<sup>rd</sup> season.

## Annual Festivals

- Bloomfield Apple Festival is held in October (<http://bloomfieldapplefest.com/>)
- Greene County Marsh Madness Festival Goose is held at Pond Fish and Wildlife Area in March (<http://www.marshmadness.info/>)
- The Linton Music Festival, held annually over Labor Day is a completely free event with nearly 50 artists gracing 3 stages over 3 days in Linton. Over 10,000 people attended last year's festival (<http://www.lintonmusicfest.com/>)
- The Linton Freedom Festival is an annual event in Linton over the 4th of July Holiday. It includes "Indiana's Largest Independence Day Parade" which brings nearly 40,000 people to Linton each year (<http://lintonfreedomfestival.org/>)

### **SPOTLIGHT ON: Battery Information Center**

A \$12 million battery testing center is coming to Greene County, located in the WestGate at Crane Technology Park.

Greene County officials approved a financing plan late Wednesday afternoon that will bring The Battery Innovation Center (BIC) to a southern Greene County site near the under-construction Interstate 69.

The project is the brainchild of Energy Systems Network (ESN), an Indianapolis-based not-for-profit economic initiative, focused on the development of Indiana's "clean tech" sector. ESN launched the joint venture with Battery Innovation Center, Inc., and the Battery Innovation Center Institute, Inc. as newly-created not-for-profit entities.

The Greene County Council unanimously approved a resolution that authorizes the issuance of \$15.8 million in economic development bonds to finance the establishment of the BIC in a public-private partnership.

ESN officials say the new facility will link battery manufacturers, government agencies and research labs, academia, and Fortune 500 companies together to accelerate the nation-wide battery market.

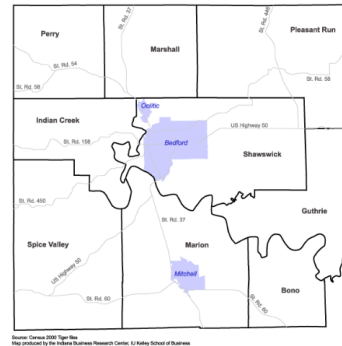
The BIC project will involve construction of a 40,000 square foot facility, located on an 8-acre tract of the old Waggoner property, near the intersection of U.S. 231 and County Line Road (CR 800S). The land, located northwest of Naval Surface Warfare Center Crane (NSWC Crane), was recently purchased by the Greene County Redevelopment Commission and is part of the package offered to entice ESN to locate at the selected site.

Source: <http://www.gcdailyworld.com/story/1852648.html>



# LAWRENCE COUNTY

City/Town	Population (2010)
Bedford	13,413
Mitchell	4,567
Oolitic	1,184



## Economic Development Resources

- Lawrence County Economic Growth Council: <http://www.lawrencecountygrowth.com/>
- Southern Indiana Development Commission: <http://www.sidc.cc/>

## Community Organizations

- Lawrence County Tourism Commission: <http://www.limestonecountry.com/>
- Bedford Chamber of Commerce: <http://www.bedfordchamber.com/>

## City/Town Resources

- City of Bedford: <http://bedford.in.us/>
- City of Mitchell: <http://www.mitchell-in.gov/>

## Community Philanthropy

- Lawrence County Community Foundation: <http://cfpartner.org/lccfhistory.htm>

## Education Resources

- North Lawrence Community Schools: <http://www.nlcs.k12.in.us/>
- Mitchell Community Schools: <http://www.mitchell.k12.in.us/>
- Community Learning Center of Lawrence County
- North Lawrence Career Center: <http://www.nlcs.k12.in.us/nlcc/>
- Oakland City University-Bedford: <http://www.oak.edu/centers/bedford.php>

## Quick Facts

- Lawrence County has a population of 46,195 (2011). It is the largest county in the Radius Indiana region by population.
- The largest industry sector in the county is health care, social assistance with 2,132 jobs, 17.4% of total employment.
- Manufacturing is the second largest industry sector with 1,763, or 14.4% of total jobs. The average annual wage for manufacturing workers in the county is \$54,888.
- Lawrence County is known as the Limestone Capital of the World. Some famous buildings constructed from limestone include the Empire State Building in New York, the Tribune Tower in Chicago, the Pentagon and the National Cathedral in Washington D.C. Additionally, 35 of the state capitol buildings are made of Indiana limestone.
- Bedford and Lawrence County, Indiana are located in south central Indiana approximately 70 miles south of Indianapolis and 70 miles north of Louisville, Kentucky.
- Since 1942, General Motors (GM) has operated a production facility in Bedford. GM Powertrain Bedford is one of the leading aluminum die casting facilities in the world and employs over 400 workers.
- Bedford is located about 25 minutes south of Bloomington, home of Indiana University.
- Lawrence County is home of three United States astronauts. Kenneth D. Bowersox and Charles D. Walker both hail from Bedford. Mitchell is the hometown of Virgil I. "Gus" Grissom, the second man in space.

## Major Employers

- **GM Powertrain Bedford** ([http://media.gm.com/media/us/en/gm/company\\_info/facilities/powertrain/bedford.html](http://media.gm.com/media/us/en/gm/company_info/facilities/powertrain/bedford.html)): uses an aluminum die cast process to manufacture transmission casings and converter housings for new fuel efficient six speed transmissions. In June 2011, it was announced that GM would invest \$49 Million in Bedford for tooling and equipment to produce components for a recently announced 8-speed transmission and a future small engine program. In July 2001, GM announced that it would invest \$32 Million in Bedford for transmissions for Buick and Chevrolet models with eAssist fuel-saving technology. The production employs over 400 employees for a total of \$37,122,262 in Wages, \$7,801,160 in Payroll Taxes, and \$1,208,974 in Property Taxes.
- **Indiana Limestone Company** ([www.indianalimestonecompany.com/](http://www.indianalimestonecompany.com/)): a supplier of Indiana Limestone raw materials and finished Indiana limestone building products.
- **Bedford Machine & Tool Co.** ([www.bedfordmachine.com/home/](http://www.bedfordmachine.com/home/)): operate a custom machine tooling shop in a 96,000 square foot facility in Bedford.
- **Indiana University Health Bedford Hospital** ([www.iuhealthbedford.org/](http://www.iuhealthbedford.org/)): operates as a critical access hospital with inpatient, outpatient and ambulatory care services and 24-hour emergency room and EMS services.
- **Rogers Group** (<http://rogersgroupinc.com/LocationsProducts/ViewLocation/tabid/75/ArticleId/52/Mitchell-Crushed-Stone.aspx>): began its operation of Mitchell Crushed Stone in the early 1950's. Rogers Group's rock quarries and sand and gravel operations offer high quality aggregate products for residential, commercial, highway, and industrial applications.
- **Whitney Tool** (<http://www.whitney-tool.com/>): Manufactures broad range of high speed steel and carbide milling cutters.

## AVAILABLE SITES



Founded in 2008, East Gate Business and Technology Center (EGBTC) is a retrofitted facility formerly owned by Visteon Corporation, to perform systems integration work. EGBTC is currently leasing office and manufacturing space for industrial and technology companies. EGBTC helps potential tenants hit the ground running by providing furnished offices, conference rooms, research and development labs, and high speed internet. EGBTC supports businesses needing office, warehousing, and manufacturing space ranging from 2,000 sq.ft. up to 200,000 sq.ft. by providing move in ready space as well as build to suit options.

Located within close proximity to NSWC Crane, Muscatatuck Urban Training Center, and Camp Atterbury, EGBTC is an ideal fit for high tech companies and defense contractors. In addition, EGBTC is located within a HUB Zone, Military Enhanced Area, and Enterprise Zone, which offers many business and tax incentives.

In September 2009, SAIC, a Fortune 500 scientific, engineering and technology applications company, indicated that they will lease 55,000 square feet at EGBTC with 60 employees initially occupying the facility. These employees support contracts at NSWC Crane.

For more information on East Gate see <http://www.egbtc.com/>. For more information on additional sites and properties in Lawrence County contact Gene McCracken, Executive Director, Lawrence County Economic Growth Council at 812-275-4493 or [economic@hpcisp.com](mailto:economic@hpcisp.com).

## Cultural and Recreation Activities

- **Spring Mill State Park** (<http://www.in.gov/dnr/parklake/2968.htm>): includes a Pioneer Village, Nature Center, Grissom Memorial, and Twin Caves Boat Tour.
- **Lawrence County Recreational Park** ([http://www.abateofindiana.org/programs/lc\\_recreation\\_park.html](http://www.abateofindiana.org/programs/lc_recreation_park.html)): features almost 400 acres of trails, rolling hills, meadows, and wooded terrain in Springville.
- **Bluespring Caverns** (<http://www.bluespringcaverns.com/>): ability to take a guided boat ride on America's longest underground river
- **Hoosier National Forest** (<http://www.fs.usda.gov/hoosier/>): over 200,000 acres in nine counties of south-central Indiana, the Forest is located in two of the natural regions of Indiana. The northern portion of the Forest is within the Brown County Hills section of the Highland Rim Natural Region.

## Annual Festivals

- The City of Mitchell hosts the Persimmon Festival every September (<http://persimmonfestival.org/>)
- The Limestone Heritage Festival is held in Bedford every 4<sup>th</sup> of July (<http://www.bedfordchamber.com/ViewNews.aspx?NID=236>)
- The Boogie is an annual biker fest held at the Lawrence County Recreational Park (<http://www.abateofindiana.org/events/boogie.html>)



## **SPOTLIGHT ON: Indiana Space Complex**

The Lawrence County Space Board Inc. is determined to establish a world class space and science complex, creating a spaced-themed educational forum. Lawrence County is home to astronauts Virgil Grissom, Charles Walker and Kenny Bowersox.

The new Indiana Space Complex would be home to a 30,000-40,000 square foot structure housing a museum, learning center, theater, and Indiana's Space Hall of Fame.

In recent months the board has:

- Hired a nonprofit organizational accountant for filing paperwork for 501(c)(3) certification. Submission is due this month.
- Established an interim fiscal agency agreement with the Lawrence County Tourism Commission, allowing for funding and expenditures.
- Hired a web designer to create a website for public outreach. The website will be launched in early 2012.
- Met with state officials, astronauts and family members, and representatives of the Indiana Space Grant Consortium.

The group has also found two possible sites for the space center. Both are between Bedford and Mitchell. The goal now is to get the word out to show potential investors the county and region are behind the project and how the community can benefit.

Source: [http://www.wbiw.com/local/archives/2011/12/space\\_and\\_science\\_complex\\_movi.php](http://www.wbiw.com/local/archives/2011/12/space_and_science_complex_movi.php)

# MARTIN COUNTY

City/Town	Population (2010)
Loogootee	2,751
Shoals	756
Crane	184



## Economic Development Resources

- Martin County Alliance: [www.mcedc.org](http://www.mcedc.org)
- West Gate Authority: [www.westgatecrane.com](http://www.westgatecrane.com)
- Southern Indiana Development Commission: <http://www.sidc.cc/>

## Education Resources

- Shoals Community School Corporation: [www.shoals.k12.in.us](http://www.shoals.k12.in.us)
- Loogootee Community School Corporation: [www.loogootee.k12.in.us](http://www.loogootee.k12.in.us)
- Community Learning Center of Martin County: <http://mcol.us/learningcenter.htm>

## Community Philanthropy

- Community Foundation Partnership/Martin County Community Foundation: [www.cfpartner.org](http://www.cfpartner.org)

## Community Organizations

- Martin County Chamber of Commerce: [www.martincountyindianachamberofcommerce.org](http://www.martincountyindianachamberofcommerce.org)
- Visit Martin County: [www.visitmartincounty.org](http://www.visitmartincounty.org)

## Quick Facts

- Martin County has a population of 10,332 (2011). It is the smallest county in the Radius Indiana region by population.
- Martin County has the highest annual average wage per job in Indiana at \$60,311 (2010).
- Martin County is home to Naval Surface Warfare Center (NSWC) Crane a \$2 billion military installation; third largest U.S. Naval facility by area; employs over 3,500 civilian and military personnel in engineering, technician, and administrative positions.
- Additional defense-related activities include Crane Army Ammunition Activity (CAAA) which is responsible for the storing, receiving, production and demilitarization of conventional ammunition. Activities also include design, development and improvement of ordnance components and processes.
- There is significant research and development at NSWC Crane focused on the development of expeditionary warfare systems, fleet maintenance and modernization, radar, power systems, strategic systems, small arms, surface and airborne electronic warfare, night vision systems, and undersea warfare systems.
- An article posted on newgeography.com in September 2011 found that Martin County had the fourth highest concentration of STEM-related jobs in the United States (<http://www.newgeography.com/content/002463-states-with-largest-presence-stem-related-jobs>).
- WestGate @ Crane Technology Park is located in parts of Martin County. It is qualified as a certified technology park (CTP) by the State of Indiana and home to over ten defense contractors with NSWC Crane-related contracts including SAIC and EG&G.
- The expansion of I-69 through near Martin County improves connectivity to Indianapolis and Evansville.
- Most of the land in Martin County is owned by the US Government. About a third of the county belongs to NSWC Crane and about a quarter of the county belongs to Hoosier National Forest.

## Cultural and Recreation Activities

- **Hoosier National Forest** (<http://www.fs.usda.gov/hoosier/>): over 200,000 acres in nine counties of south-central Indiana, the Forest is located in two of the natural regions of Indiana. The northern portion of the Forest is within the Brown County Hills section of the Highland Rim Natural Region.
- **Martin County Museum** ([http://www.visitmartincounty.org/sight\\_seeing.htm](http://www.visitmartincounty.org/sight_seeing.htm)): Located in the old Court House in Shoals, the Museum commands a view of the valley and the town of Shoals.
- **Jug Rock** ([http://www.visitmartincounty.org/sight\\_seeing.htm](http://www.visitmartincounty.org/sight_seeing.htm)): the largest free-standing table rock formation in the United States east of the Mississippi River
- **Lark Ranch** (<http://www.larkranch.com/index.html>): a 600 acre ranch that hosts a corn maze during September and October
- **West Boggs Park** (<http://www.westboggs.com/>): a property of the Daviess-Martin Joint County Parks & Recreation Department that includes a 1,500 acre multi-use outdoor recreation area, providing camping, boating, fishing picnicking and a wide range of activity related venues.

## Annual Festivals

- The Catfish Festival is held in Shoals over the 4<sup>th</sup> of July Holiday ([http://www.visitmartincounty.org/catfish\\_festival.htm](http://www.visitmartincounty.org/catfish_festival.htm))



### **SPOTLIGHT ON: Purdue, NSWC Crane developing energy storage degree program**

Purdue University is developing a program in energy storage technology in cooperation with the Naval Surface Warfare Center (NSWC), Crane Division, located at Crane, Ind.

Purdue and NSWC Crane expect the program eventually to lead to a master's degree in chemical engineering. The development of electrical and chemical-based energy storage devices is a critical component of such modern technologies as electric vehicles, plug-in hybrid electric vehicles, solar cells, wind turbines, and diesel and biodiesel generators.

The program began in July 2011 with two intensive segments for 16 students at the Crane West Gate Research Park.

The summer program is non-credit but will offer a certificate. In the Fall of 2011, students took their first credit course. The courses are taught through a combination of on-campus and online delivery. They come from chemical, materials and industrial engineering.

The master's in chemical engineering program is expected to take three years to complete. The initial program will be developed for NSWC Crane's specifications. Other individuals or businesses will be able to participate in future offerings.

Source: <http://www.purdue.edu/newsroom/general/2011/11080LechtenbergCrane.html>

## Major Employers

- **NSWC Crane** (<http://www.navsea.navy.mil/nswc/crane/default.aspx>): a shore command of the U.S. Navy. The mission of NSWC Crane is to provide acquisition engineering, in-service engineering and technical support for sensors, electronics, electronic warfare and special warfare weapons.
- **Crane Army Ammunition Activity** (<http://www.crane.army.mil/>): mission is receive, store, ship, produce, renovate and demilitarize conventional ammunition, missiles and related components to meet contingency requirements in support of the warfighter.
- **National Gypsum** (<http://www.nationalgypsum.com/about/locations.htm>): operates a gypsum board production plant in Shoals, Indiana. Employs around 100 individuals.
- **United States Gypsum Corporation** (<http://www.usg.com/worldwide/locations.html>): operates a gypsum rock mine/quarry in Shoals, Indiana.

## AVAILABLE SITES



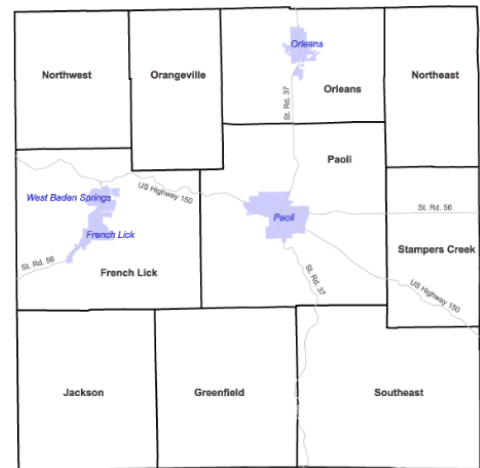
The WestGate serves up a unique competitive advantage for commercial companies and university faculty providing federal contract work for the \$2 billion Naval Surface Warfare Center (NSWC) in the 100-square-mile NSA facility in southwest Indiana. Companies in the park easily collaborate with global operations through high-speed gigabit fiber-optic connectivity (all levels of data security available). New office, industrial and mixed use buildings provide a distinctive growth benefit for commercial defense giants EG&G, SAIC and ITT as well as a growing cluster of defense-related Fortune 500 companies and small businesses serving NSWC/NSA contracts. Companies considering relocation or expansion to the WestGate have both leasing options for existing facilities or customized build-to-suit opportunities in the park's business-friendly environment.

The WestGate holds Certified Technology Park (CTP) status from the Indiana Economic Development Corporation (IEDC), which makes it eligible for direct state support. The WestGate can offer a number of tax and federal/state incentives (including HUBZone benefits).

For additional information on WestGate please see <http://www.westgatecrane.com/siteselectors.html>. For additional information on sites and properties located in Martin County please contact Tim Kinder, Executive Director of the Martin County Alliance at 812-295-4800 or [tkinder@martinalliance.org](mailto:tkinder@martinalliance.org).

# ORANGE COUNTY

City/Town	Population (2010)
Paoli	3,677
Orleans	2,273
French Lick	1,807
West Baden Springs	574



## Economic Development Resources

- Orange County Economic Development Partnership: [www.ocedp.com](http://www.ocedp.com)
- Indiana Region 15 Planning Commission: <http://www.ind15rpc.org/>

## City/Town Resources

- Town of Orleans: <http://www.town.orleans.in.us/>
- Town of Paoli: <http://www.townofpaoli.com/>

## Community Philanthropy

- **Orange County Community Foundation:** [www.organcecountycommunityfoundation.org](http://www.organcecountycommunityfoundation.org)

## Education Resources

- Ivy Tech Orange County Learning Center: <http://ivytech.edu/bloomington/orangecounty/>
- Orleans Community School Corporation: [www.orleans.k12.in.us](http://www.orleans.k12.in.us)
- Paoli Community Schools: [www.paoli.k12.in.us](http://www.paoli.k12.in.us)
- Spring Valley Community Schools: [www.svalley.k12.in.us](http://www.svalley.k12.in.us)

## Community Organizations

- Visit French Lick West Baden: <http://www.visitfrenchlickwestbaden.com/>
- Orleans Chamber of Commerce: <http://www.historicorleans.com/>
- Paoli Chamber of Commerce: [www.paolichamber.com](http://www.paolichamber.com)

## Quick Facts

- Orange County has a population of 19,969 (2011).
- The largest industry sector in Orange County is accommodation and food services with 1,846 of jobs, 25% of total employment in the county.
- The second largest industry sector is manufacturing with 1,126 jobs, 15.3% of total employment. Paoli, Inc. is one of the larger manufacturers producing wood furniture.
- The French Lick Resort located in French Lick and West Baden Springs includes two historic spa hotels, a casino, and two world-class golf courses. It brings visitors from around the world into the region.
- Orange County sits in the middle of the eight-county Radius Indiana Region.
- Orange County provides ample recreational opportunities at Patoka Lake, Hoosier National Forest, and Paoli Peaks.

## Major Employers

- **The French Lick Resort ([www.frenchlick.com](http://www.frenchlick.com)):** luxury hotels, casino, and other amenities that employs over 1,700 individuals in Orange County
- **Paoli Inc. ([www.paoli.com](http://www.paoli.com)):** Located in Orleans. Founded in 1926 as a residential wood seating company, Paoli has evolved into a premiere provider of wood office furniture to the national market.
- **Reynolds Inc. (<http://www.layne.com/Brands/Reynolds-Inc.aspx>):** Offer design and construction services to supply high quality raw water, treat water for consumption and reuse and deliver water efficiently.
- **Pluto Corp (<http://www.plutocorp.com/index.html>):** two plants in French Lick, Indiana, a 30,000 square foot manufacturing and warehousing facility, which is located 1/4 mile away from our main 120,000 square foot plant. specializing in both the production of HDPE custom blowmolded bottles, and the filling and packaging of liquid household products.
- **Indiana University Health Paoli ([www.iuhealthpaoli.org/](http://www.iuhealthpaoli.org/)):** specializes in rural, community-based services to serve south central Indiana. IU Health Paoli includes a 24-hour emergency room with an Air Evac helicopter, New Life Center, community outreach programs and visiting specialist services.

## AVAILABLE SITES

### **Orleans Industrial Site (41.77 acres) - certified by Hoosier Energy as a Shovel Ready Site**

This site is located 50 miles northwest of Louisville, KY, 90 miles south of Indianapolis, and 46 miles south of Bloomington, IN. The property is bordered on the south by State Road 337; on the west by a metal fabricator; and on the north and east by farm property. The site is flat, clear, and currently used for agriculture. Additional acreage is available. -Land price is approximately \$10,000 per acre. -Economic Development incentive rates are available to industrial customers which meet minimum demand (500 KW) requirements. -The CSX rail line which serves Orleans has recently been included in the CSX "core" rail system and is not in danger of service reductions or future abandonment. Local service is currently provided three days per week and five days per week service may be available if required to meet shipper's needs. Assistance may be available from the railroad for the cost of extending a spur to the site.

See link for additional information: <http://hoosiersites.com/media/docs/new-9.PDF>

For additional information on sites and properties in Orange County please contact Judy Gray, Executive Director of the Orange County Economic Development Partnership at 812-723-3388 or [Jgray@ocedp.com](mailto:Jgray@ocedp.com).

## Cultural and Recreation Activities

- **French Lick Resort** (<http://www.frenchlick.com/>): includes two restored historic hotels (French Lick Springs Hotel and the West Baden Springs Hotel dating back to the 1880s providing a casino, luxury spas, and two 18 hole PGA rated golf courses, Pete Dye, a new modern golf course and Donald Ross, an old restored historic course.
- **Big Splash Adventure Indoor Waterpark & Resort** ([www.bigsplashadventure.com](http://www.bigsplashadventure.com)): Big Splash Adventure Indoor Water Park & Resort in French Lick, Indiana offers a 40,000 square feet of water park. It is enclosed in a glass structure - one of the few retractable roof water parks.
- **French Lick Scenic Railway** ([www.indianarailwaymuseum.org](http://www.indianarailwaymuseum.org)): takes riders on a 20 mile trip through Hoosier National Forest.
- **Patoka Lake** (<http://www.patokalakeindiana.com/>): the second largest reservoir in Indiana and is spread across Dubois, Crawford, and Orange counties in southern Indiana.
- **Hoosier National Forest** (<http://www.fs.usda.gov/hoosier/>): over 200,000 acres in nine counties of south-central Indiana, the Forest is located in two of the natural regions of Indiana. The northern portion of the Forest is within the Brown County Hills section of the Highland Rim Natural Region.

## Annual Festivals

- The Orange County Pumpkin Festival is held in late September/early October (<http://www.wflq.com/2010PumpkinFest.html>)



### **SPOTLIGHT ON: Ivy Tech in Orange County**

Ivy Tech Community College's Bloomington campus is offering college courses and Corporate College short-term training opportunities in French Lick, Indiana. Ivy Tech will offer college classes in Math, Reading, Writing, Business, Computers, English, Psychology, and Student Success at the Springs Valley Community Learning Center. Corporate College short-term training options include Food Safety, First Aid/CPR, Computers, Customer Service, Microsoft Word, Microsoft Excel, Microsoft PowerPoint, and others.

Students can take Ivy Tech classes at Springs Valley Community Learning Center that could apply toward earning an Associate degree, or students have the option to transfer their credits or entire degrees to a four-year institution in Indiana to earn a Bachelor's degree. Ivy Tech Corporate College short-term training certifications prepare individuals for the workplace through retraining and/or gaining new skills.

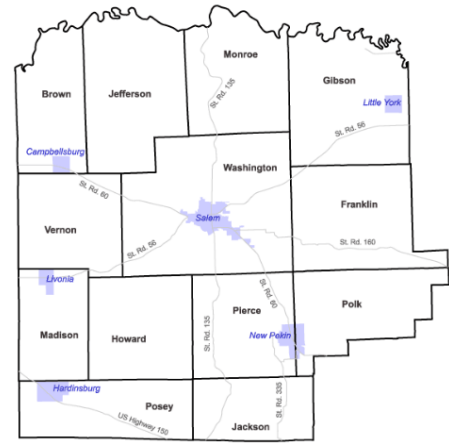
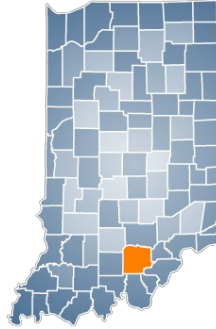
A site coordinator has been named for the Learning Center, Carol Hudelson. Hudelson comes to Ivy Tech with past experience as an educator in the area and serves on the Board of Directors for Lost River Community Cooperative and on the Orange County Lilly Scholarship Committee.

Regional funding partners that made this cooperative possible include: the towns of French Lick, Orleans, Paoli and West Baden; the Orange County Economic Development Partnership, RADIUS Indiana, the Orange County Community Foundation, the Orange County Development Commission, and the Orange County Community Foundation's Orange County Commissioner's Supporting Organization.

Source: <http://www.insideindianabusiness.com/newsitem.asp?ID=51573>

# WASHINGTON COUNTY

City/Town	Population (2010)
Salem	6,172
New Pekin	1,401
Campbellsburg	578
Hardinsburg	244
Little York	192
Livonia	128
Saltillo	92
Fredericksburg	85



Source: Census 2000 Tiger file  
Map produced by the Indiana Business Research Center, IU Kelley School of Business

## Economic Development Resources

- Washington Economic Development Growth Partnership: <http://www.wcegp.org/>
- River Hills Economic Development District: <http://www.riverhills.cc/>

## City/Town Resources

- City of Salem: <http://www.cityofsalemin.com/>
- Town of New Pekin: <http://www.townofnewpekin.com/>

## Community Philanthropy

- Washington County Community Foundation: <http://www.wccf.biz/>

## School Corporations/Districts

- East Washington School Corporation: <http://ewsc.k12.in.us/>
- Salem Community Schools: <http://www.salemschools.com/>
- West Washington School Corporation: <http://www.westwashingtonschools.org/>

## Community Organizations

- Washington County Chamber of Commerce: [www.washingtoncountychamber.org](http://www.washingtoncountychamber.org)
- Washington County Tourism Bureau: [www.washingtoncountytourism.org](http://www.washingtoncountytourism.org)
- Youth First of Washington County: <http://youthfirstwc.org/>
- Community Learning Center of Washington County: 812-883-6989

## **Quick Facts**

- Washington County has a population of 28,147 residents (2011) .
- Manufacturing accounts for 1,370 jobs or 25.6% of total employment in the county (2010).
- Located within the Louisville-Jefferson County, KY-IN Metropolitan Statistical Area, 35 miles from the City of Louisville.
- Located 18 miles from Interstate 65 (I-65), 100 miles from Indianapolis, Indiana and 120 miles from Cincinnati, Ohio.
- The J.F. Helsel Commerce Center is a 140-acre industrial park certified as a shovel-ready site by Hoosier Energy.
- John Hay, private secretary to President Abraham Lincoln and Secretary of State to Presidents William McKinley and Theodore Roosevelt, was born in Salem and is generally known as Salem's most prominent citizen. A variety of museums and local buildings make reference to Mr. Hay's connections to the town.

## Major Employers

- **American Stave Company** (<http://www.americanstavecompany.com/index.html>): operates a mill that purchases white oak stave logs and transforms them into wine and whiskey barrels.
- **Blue River Cabinetry** (<http://www.bluerivercabinetry.com/>): producer of high quality wood cabinetry.
- **Fabri-Form Company** (<http://www.fabri-form.com/en/>): a custom plastic fabricator and thermoformer located in Pekin that supplies quality parts, on time, through innovative design, engineering and manufacturing services.
- **Frank Miller Lumber** (<http://www.frankmiller.com/about/facilities>): kiln operation and concentration yard located in Salem, Indiana.
- **GKN Sinter Metals** ([www.gkn.com/](http://www.gkn.com/)): facility located in Salem. GKN Sinter Metals is the world's leading supplier of metal powder precision components.
- **Jean's Extrusions** (<http://www.jeans-extrusions.com/>): located in Salem, a custom profile extruder of flexible, rigid, dual durometer PVC, and santoprene compounds.
- **Kimball Office** ([www.kimballoffice.com/](http://www.kimballoffice.com/)): production facility for office furniture located in Salem, Indiana.
- **Net Shape Technologies Inc.** (<http://www.netshapetech.com/>): a leading supplier of highly engineered precision components located in Campbellsburg.
- **Next Wave Systems, LLC** (<http://www.nextwavesys.com/#all>): engineering and technology company that specializes in alternative energy products and integrated defense and security systems.
- **Peerless Gear (Husqvarna Outdoor Power)** (<http://www.peerlessgear.com/>): Peerless offers a broad selection of transmission solutions to the outdoor power equipment market ranging from lawn and garden tractors to zero turn mowers to power spreaders. Peerless brand was acquired by Husqvarna Outdoor Power in February of 2009.

## AVAILABLE SITES



**J.F. Helsel Commerce Center** (<http://hoosiersites.com/media/docs/new-4.PDF>): Washington County has developed a 140-acre Industrial Park at the east edge of the City of Salem, the county seat. The infrastructure is in place to make it a suitable location for a variety of industries, large and small, specializing in manufacturing, assembly, and distribution.

For more information, please contact the Washington County Economic Development Partnership at 812-883-8803 or [info@wcegp.org](mailto:info@wcegp.org)

## Cultural and Recreation Activities

- **Beck's Mill** (<http://www.becksmill.org/>): Beck's Mill is one of only 20 mills still standing in the State of Indiana. In 2008 Beck's Mill was returned in restored and operational condition to the directors of the Friends of Beck's Mill, Inc.
- **John Hay Center** (<http://johnhaycenter.org/>): a museum complex located in downtown Salem. Making up the center are the birthplace of John Milton Hay, the Stevens Memorial Museum, a pioneer village and The Depot railroad museum.
- **John Hay Lake** (<http://www.washingtoncountychamber.org/shop/Washington%20County%20Indiana%20Sports%20and%20Recreation/lake-john-hay>): a 210-acre surface area impoundment located, in the Rush Creek Valley, 6 miles northwest of Salem. The lake offers tournament fishing or just a day of leisurely angling. This primitive area is also great for observing birds and animals in their natural habitat.
- **Lake Salinda**: an 88-acre surface lake, owned by the City of Salem, located 2 miles south of Salem on S.R. 135. Lake Salinda offers tournament fishing and serves as a popular fishing spot for area anglers. Lake access includes one boat ramp.
- **The Salem Depot** (<http://salemdepot.com/>): Up-to-date railroad museum, The Depot transforms the great moments of a past era of Monon history into a reality to be remembered and enjoyed by countless visitors.
- **Salem Speedway** (<http://www.salemspeedway.com/>): some of the top names in open wheel and stock car competition visit the famed high banks each racing season to challenge the demanding .555 mile oval. Situated in the scenic hills of Southern Indiana, the Salem Speedways roars to life with upwards of eighteen "special events" each year.

## Annual Festivals

- The town of New Pekin claims the distinction of having the oldest continuous Independence Day celebration in the United States of America. Pekin began celebrating Independence Day in the year 1830. (<http://www.pcbo.webs.com/>)
- Maple Syrup Festival occurs in February/March (<http://www.lmsugarbush.com/ourfestival.html>)



## SPOTLIGHT ON: Youth First of Washington County K.E.Y.S Program



### **K.E.Y.S PROGRAM**

Based on conversations with local businesses and research about what other communities are doing to develop their pipeline of talent and address the "brain drain", the Keep Encouraging Youth to Succeed (K.E.Y.S.) Program has been developed.

Through the K.E.Y.S. Program, high school age youth in Washington County will be able to pursue opportunities to develop their leadership skills, strengthen their resume and connect with valuable internship and job shadowing experiences. The

K.E.Y.S. program will be offering a series of three leadership workshops over the course of the summer. Students can participate in one or all three depending on their availability. The cost of each workshop is \$25 per session. Any student who is chosen for an internship or job shadowing experience will automatically be enrolled in the series of leadership workshops thanks to the sponsorship of the business they will be matched with.

Source: <http://youthfirstwc.org/>